

DESCRIPTION	PART NO.	QTY	DESCRIPTION	PART NO.	QTY
KIT A, 205V, 207V	10003		KIT B	10022	
Plunger	▲	1	O-Ring, 1-116	▲	1
Plunger Guide	▲	2	Valve	▲	4
Backing Ring	▲	2	White Washer, 1/2" ID	▲	8
V-Ring	▲	4	O-Ring, 1-014	▲	8
Spreader	▲	2	Head	*	2
Wave Washer	▲	2	Stuffing Box	*	2
			Manifold/Crankcase	*	1

(▲) Sold only as part of a kit. | (*) Not part of a kit, for identification only.

1. Remove pump from motor using a 3/16" hex wrench. Remove bolts at each end of pump. Figure 1 shows pump separate from motor with manifold facing upward and bolts set to side.



Figure 1

2. Holding head and stuffing box at each end pull them apart to remove plunger. Remove guides from crankcase. Remove internal seal parts with finger. Discard parts. Figure 2 shows pump ends pulled apart showing plunger, crankcase, guides and internal seals removed.



Figure 2

3. Clean the stuffing box and crankcase with a rag or towel. Inspect for damage or excess corrosion. If the stuffing box is damaged, do not rebuild. Note the order and orientation of repair parts prior to installation. Figure 3 shows repair parts in order and in correct orientation.



Figure 3

4. Place one wave washer, one spreader, two V-packings and one backing ring into bore. Figure 4 shows parts in bore.

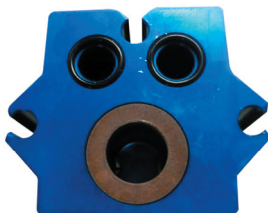


Figure 4

5. Repeat the previous steps 2-4 with the other stuffing box.

6. Place one guide at each end of crankcase. Guides should be loose and easily slide in. Figure 5 shows placing guides into crankcase.

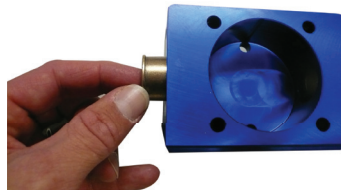


Figure 5

7. Lightly grease the plunger with clear grease provided in small grey tube. Slide plunger through plunger guides in crankcase. Figure 6 shows plunger in crankcase.

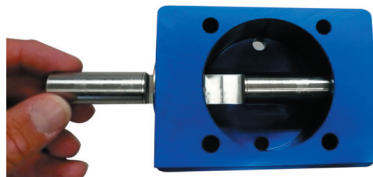


Figure 6

8. Adjust plunger slot position towards center and have slot facing work surface. Figure 7 shows plunger slot positioning.

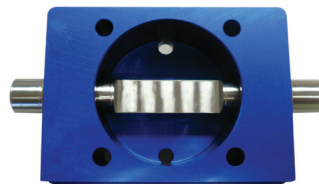


Figure 7

9. Replace all valves, O-rings and 1/2" ID white washers. Refer to image and manifold label to understand proper orientation. Figure 8 shows proper orientation with valves and O-rings in place.



Figure 8

10. Hold head and stuffing box assembly and slide onto plunger at one end. Plunger may require to be held in place. Repeat with other head and stuffing box. Center plunger slot in crankcase when finished. Figure 9, on shows putting head and stuffing box assemblies on plunger.

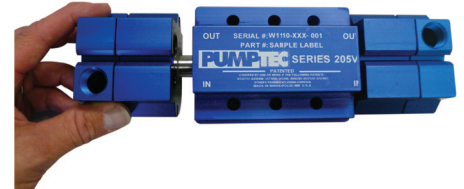


Figure 9

Figure 10 shows head and stuffing box assembled.

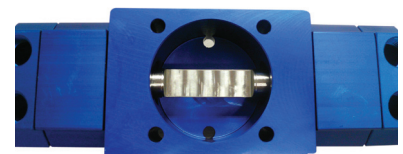


Figure 10

11. Place bolts into bolt slot at each end and tighten, DO NOT tighten completely at this time. Move plunger back and forth two times and then tighten bolts to 14 in/lbs. of torque. Figure 11 shows installing bolts at each end.

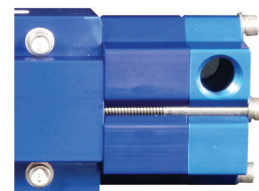


Figure 11

12. Apply **black grease** from supplied packet into corners and center of plunger slot.

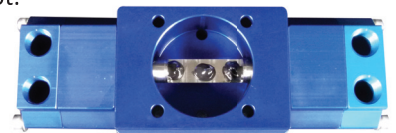


Figure 12

13. Mount pump back onto motor and tighten mounting bolts to 14 in/lbs. of torque.