



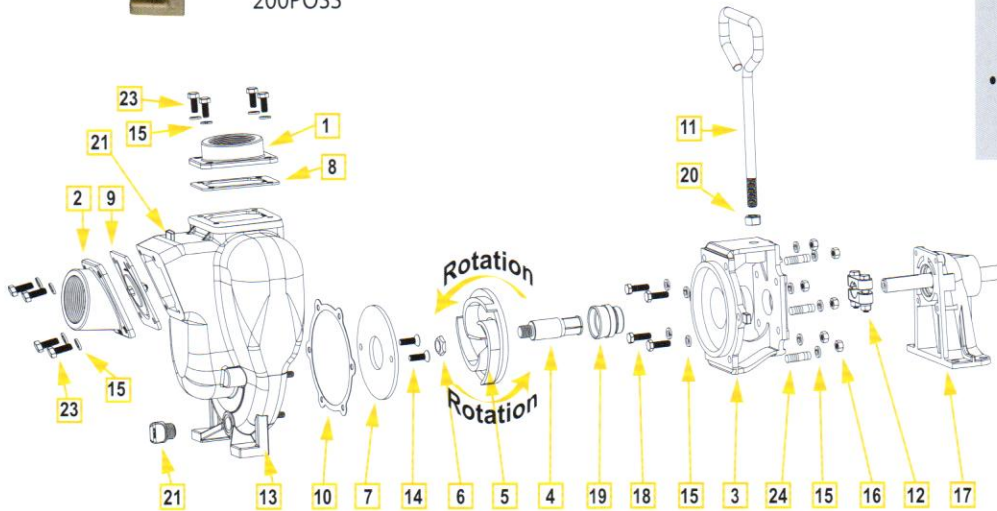
200POSS

2" Stainless Steel Pump

DESCRIPTION		
2" STAINLESS STEEL PUMP ONLY w/ 3/4" SHAFT		
PART #	PRICE	
200POSS	\$3,078.46	2" SS PUMP ONLY w/ 3/4" SHAFT
200PH6SS	\$5,910.70	2" SS PUMP w/6.5 HP HONDA
200PBSS	\$3,344.42	2" SS BEARING PEDESTAL w/ 3/4" SHAFT

TerreMax® Stainless Steel Pumps feature:

- 316 stainless steel housing & wettable internal components including impeller, sleeve, wear plate and fasteners.
- Carbon ceramic seal with 316 stainless steel cup & spring with FKM elastomer.
- Replaceable inlet and outlet flanges.
- Dynamically balanced impeller.
- Pump only packs complete & ready for attachment to gasoline engine.
- Engine warranty service available at authorized dealers.



REPLACEMENT PARTS 2" STAINLESS STEEL PUMP				
ITEM	PART NO	DESCRIPTION	QTY	
1	17000SS	2" NPT SS OUTLET FLANGE	1	
2	17002SS	2" NPT SS INLET FLANGE	1	
3	17004SS	SS ADAPTER FOR GAS ENGINE	1	
4	17006	3/4" SS SLEEVE DRIVE	1	
5	17008SS	SS IMPELLER	1	
6	17009B	5/8" IMPELLER NUT	1	
7	17011SS	SS WEAR PLATE	1	
8	17013SS	FKM OUTLET GASKET	1	
9	17016SS	FKM CHECK VALVE ASSEMBLY GASKET	1	
10	17018	ADAPTER GASKET	1	
11	15022	HANDLE	1	
12	17123	5/8" CLAMP, 3/4" SS SHAFT (KEYED CLAMP)	1	
13	17026SS	SS PUMP HOUSING	1	
14	17130SS	5/16-18 X 1.00" FHSCS, 316 SS	2	
15	V10118	5/16" LOCK WASHER	18	
16	V10119	5/16"-18 SS HEX NUT	6	
17	1282ASS	BEARING PEDESTAL	1	
18	17040	BOLT	4	
19	17035SS	FKM SS SEAL ASSEMBLY	1	
20	17010	1/2" - 24 X 1" HHCS	1	
21	LSP050	1/2" PRIME PLUG / DRAIN PLUG	1	
23	17019	5/16" - 18 X 3/4" CAP SCREW	8	
24	17042	STUD	6	
KIT	17100SS	PUMP REPAIR KIT (CONSISTS OF 4,5,7,10,14,19)	1	

2" Stainless Steel Transfer Pumps

